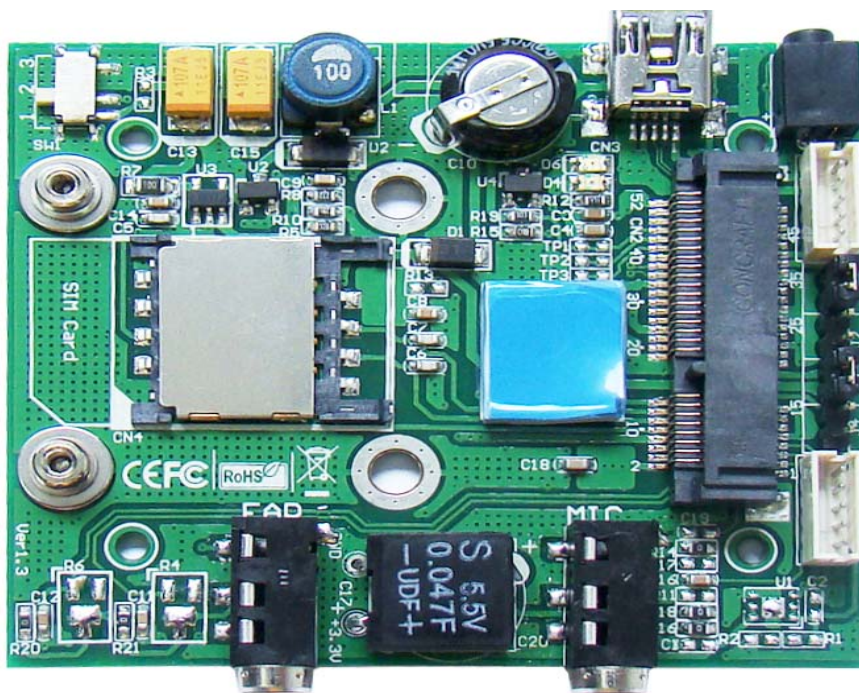


Mini Card to USB Adapter User's Manual

Model: USBMV

Sep 2010



Bplus Technology Co., Ltd.
5F, No.63, Zhou-Tzyy St., Nei-Hu,
Taipei, Taiwan
(886-2)77210550 TEL
(866-2)87974200 FAX
<http://www.Bplus.com.tw>

CONTENTS

Introduction 2

Interface..... 2

Features 3

System requirement 3

Installation procedure..... 4

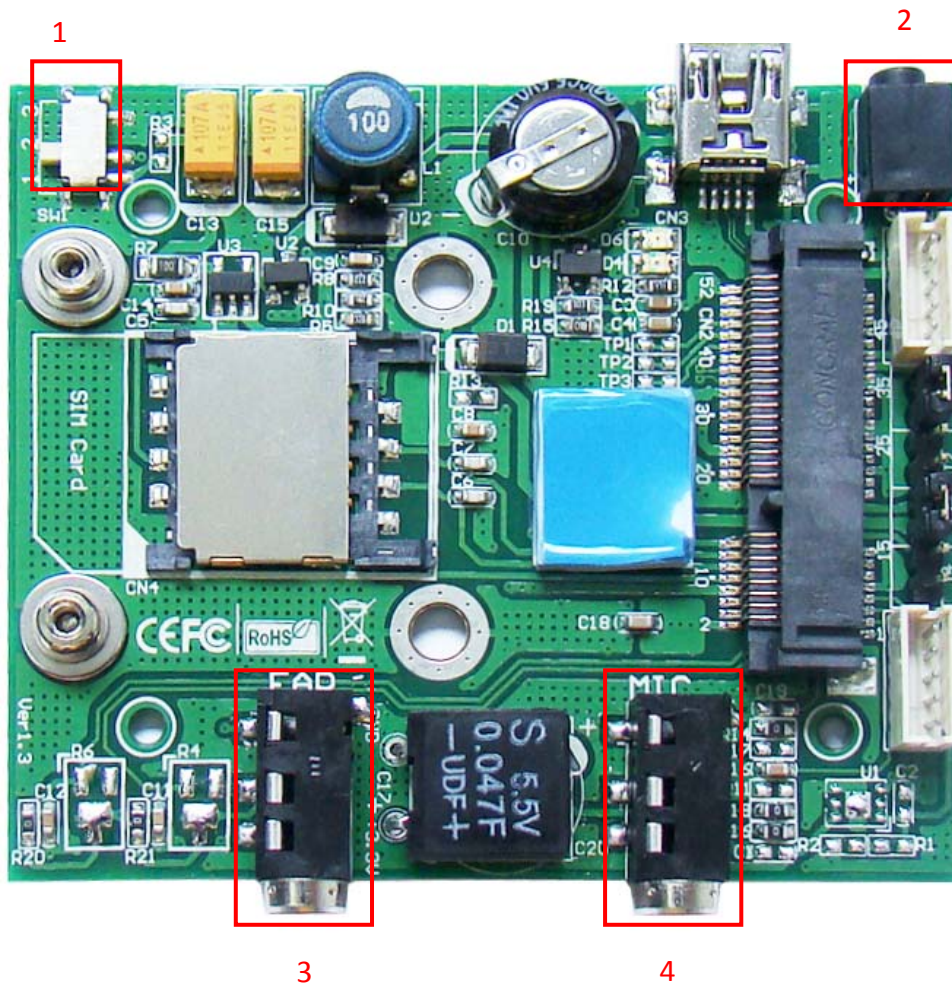
Caution 9

1.0 Introduction

The USBMV adapter is designed for desktop PCs that convert Mini-Card to USB port.

You can insert your USB type minicard such as HSPA(3.5G), GPS, 802.11a/b/g to this adapter then plug to USB port through USB cable.

2.0 Interface



Description:

1. Wireless enable/disable switch. Set SW on 1-2, RF signal ON (default set)
Set SW on 2-3, RF signal OFF.
2. DC jack. User can use external power +5V or +3.3V for minicard using.
3. Earphone Jack.
4. Microphone Jack.

3.0 Features

- USB mini type-B connection to desktop or notebook PC.
- Supports system bus interface: USB.
- Supports USB interface of Mini-Cards such as 3G, CDMA, WLAN, WWLAN, HSPA MODEM, GPS, WiMAX Mini Card to desktop PC.
- Support Voice function. Add MIC and EAR connector.
- Support SIM card connector.
- Support U.FL/IPX to RP-SMA pigtail Wifi RF cable adapter.
- (Option) 900/1800 MHz 2dBi Portable Antenna.
- (Option) 2.3GHz 2.15dBi Rubber Duck Antenna
- (Option) 2.4GHz 2.15dBi Rubber duck antenna.
- (Option) 2.5GHz 2 dBi Rubber Duck Antenna
- (Option) 2.4/5.8GHz Rubber Duck Antenna.
- (Option) 3.5GHz 2.5dBi Rubber Duck Antenna
- (Option) 5.8GHz 5dBi Rubber Duck Antenna.

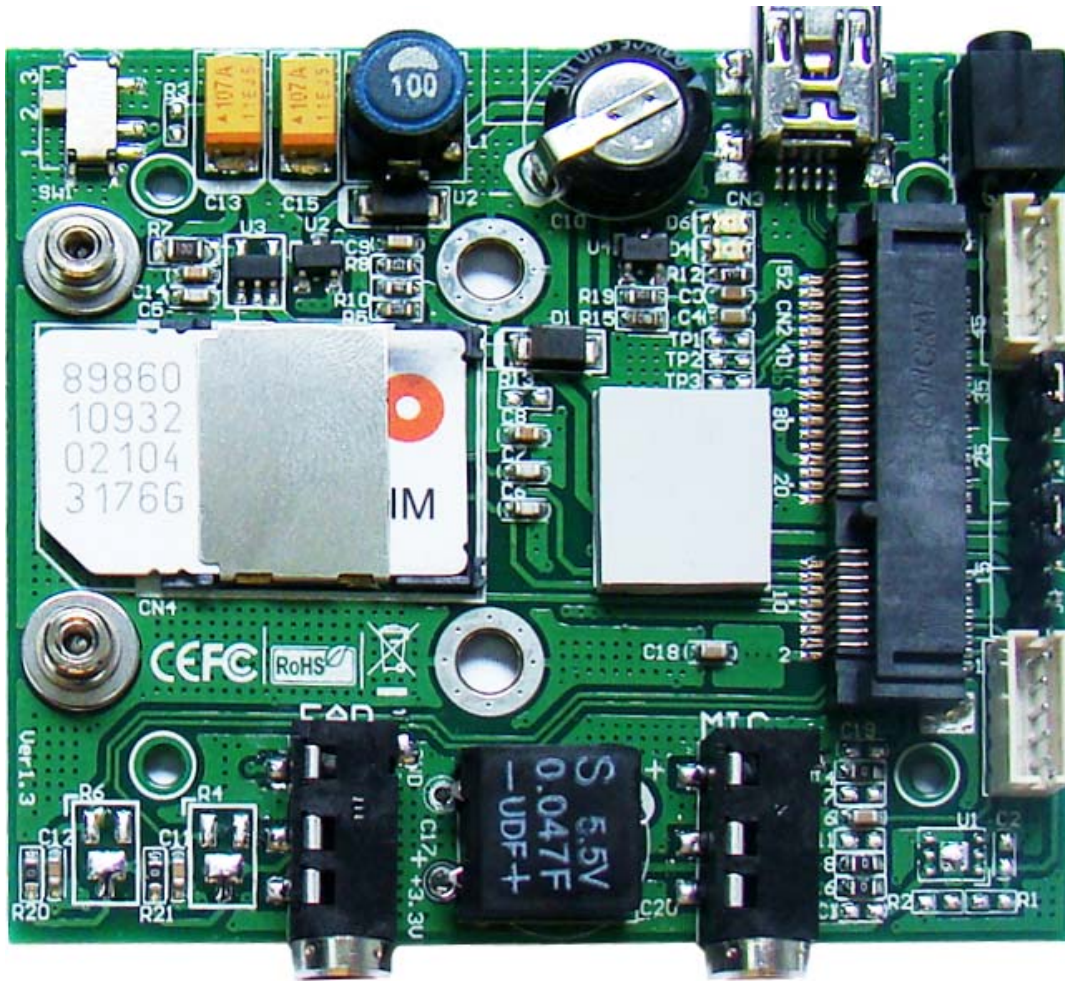
4.0 System requirement

- USB port
- Windows 2000, XP, Vista, WIN7
- Linux

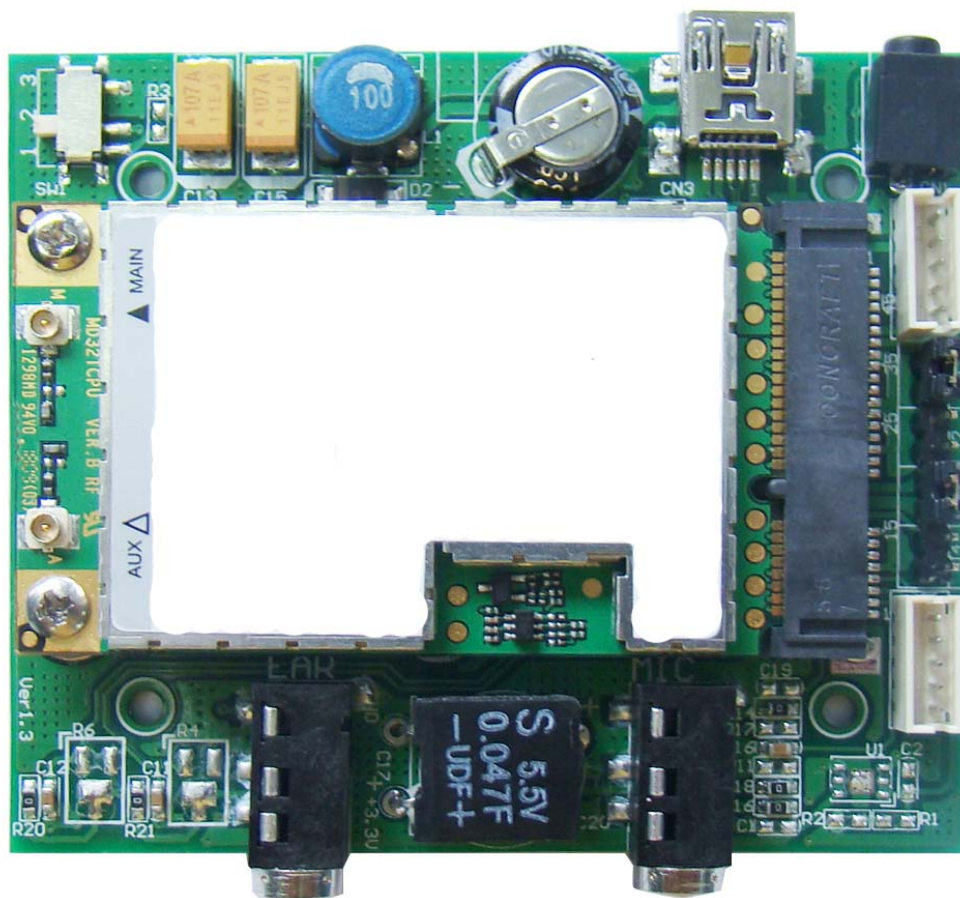
5.0 Installation procedure

Caution: the photo show below just for file written. The product that customer get may have some difference.

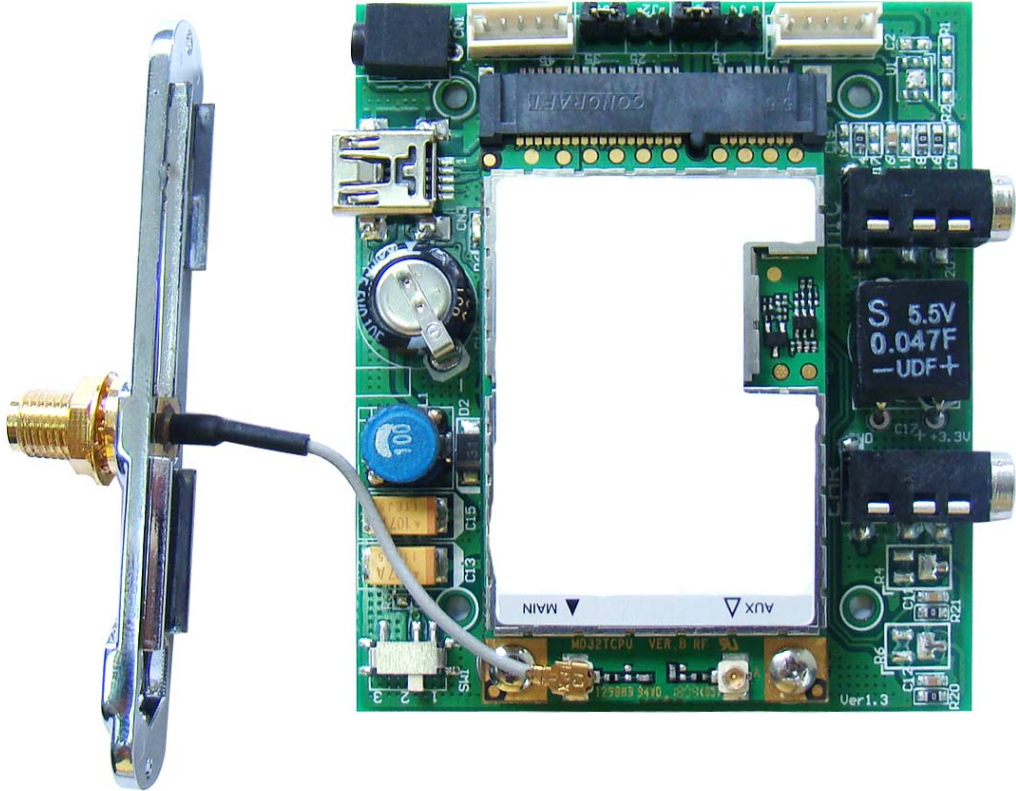
- 1) Plug SIM card into SIM card slot, and remove plastic from thermal silica gel patch.



- 2) Plug mini card device into mini PCIE connector with an angle about 30° , and fixed mini card with screw.



- 3) Put the wireless antenna on the RP-SMA CONN.



4) Plug assembled module into Aluminium Case, and fix it.



5). Link the USBMA to computer with USB cable.



For voice function, please refer below photo.



6.0 Caution

All products specifications are subject to change without notice.

Bplus reserves the right to modify the products in its line during the course of the year.